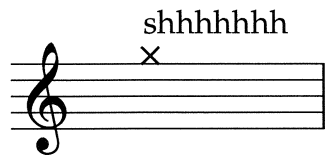
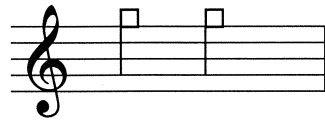


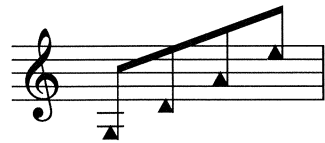
-Instructions-



vocal sound



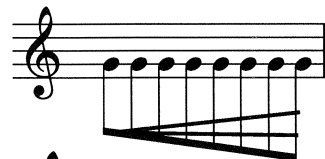
tap body of violin with fingers



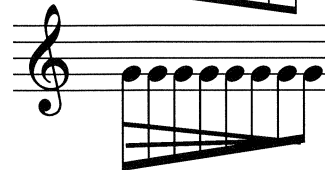
play open strings behind the bridge



fast as possible



slow to fast



fast to slow



slow wide vibrato on violin



Diamond shapes should be played with hard rubber mallets and all other notes with med. yarn mallets.

Lightly tape penny to the F# bar = penny should be placed on far end of barz

+ = dead stroke

NOTE : In movement two the beamed notes are placed in proportion to each other and should be played with that in mind.

Vibraphone/bow = The edge of the bar should be bowed using a cello bow.

f/p = random dynamics

super ball = small super ball mounted to a ratan skewer and gently pulled around the edge of the timpani. (overtones will occur)

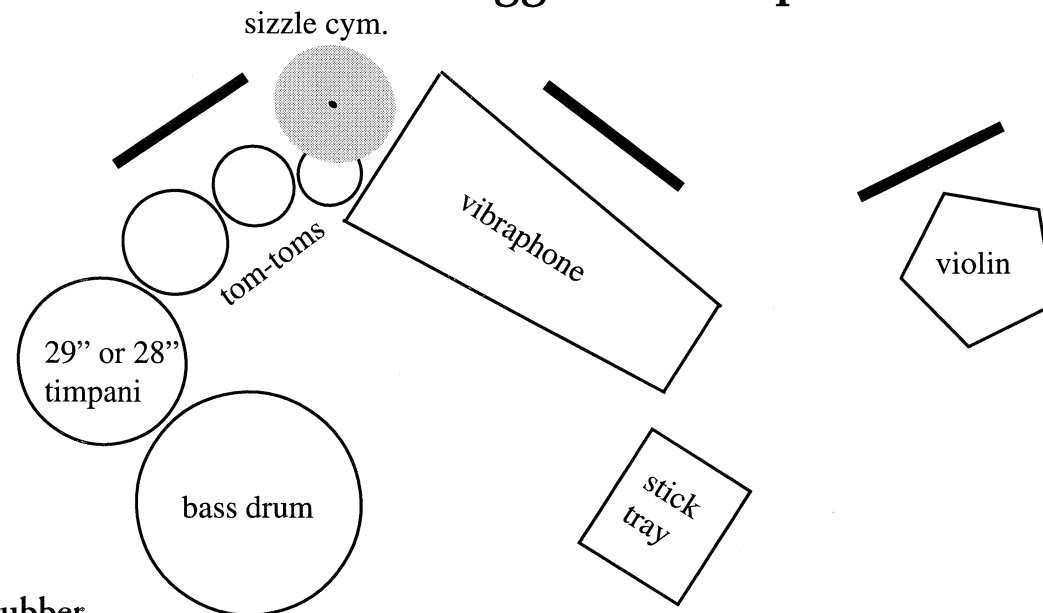
↓ = attacks should be together.

Mallets (third movement)

1 & 4 = hard rubber

2 & 3 = med. yarn

Suggested Setup



.....of time

Scott R. Meister

$\text{♩} = 112$ *very mechanical*

violin *f*

vibraphone *f* lightly pedal (ad.lib.)

13

p *f* *p* *p*

17

19

f *f* *f* *f* *f* *accel.*

24

ff *ff* *mp*

26 *gliss.* *♩ = 60 freely*

(tape penney to end of bar)

29

Red. *p* *Red.* *p* *Red.* *f* *Red.* *p* *Red.* *p*

33

mp *mp* *mp* *mp*

33 *♩ = 72*

*Red. ** *Red. ** *Red. ** *Red. **

37

41

41

45

45

49

49

54

53

55